



WELCOME
NEW YEAR 7 PUPILS

TIMINGS OF THE DAY

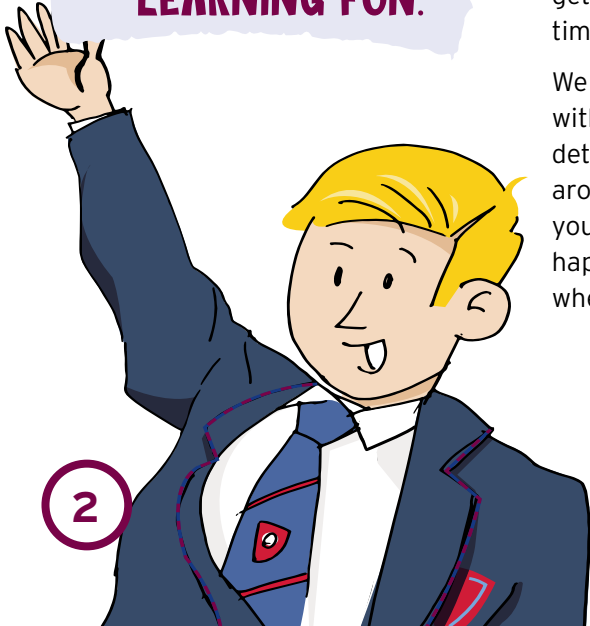


AM Registration	8:35am - 9:05am
P1	9:05am - 10:20am
P2	10:20am - 11:35am
Break	11:35am - 11:55am
P3	11:55am - 1:10pm
Lunch	1:10pm - 1:50pm
P4	1:50pm - 3:05pm

**" I REALLY ENJOY ALL
MY LESSONS; THE
TEACHERS MAKE OUR
LEARNING FUN."**

You will see your form tutor every day so you will get to know them well. You will have different teachers for your lessons and you will move between classrooms. Don't worry, you will soon get used to it and get to know your timetable.

We will give you a copy of your timetable with classroom numbers and subject details. We will help you find your way around and give you extra support until you are settled in. Everyone will be happy to help you. So if you don't know where to go, or lose anything, just ask!

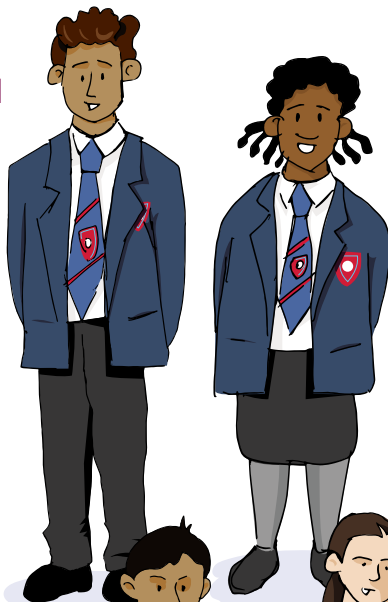


UNIFORM LIST

We have high standards at Wordsley School, so it is important to wear the correct uniform on your first day.

MALE UNIFORM

Navy blazer with blue & red trim and school badge.
Plain black trousers
School V-Neck navy jumper/with school logo (optional)
White shirt
School House Tie
Black shoes
Plain dark socks
Plain top coat (not denim or leather)
Suitable carrying bag



FEMALE UNIFORM

Navy blazer with blue & red trim and school badge.
Black knee length skirt or loose fitting trousers (not ski pants, leggings or made from stretchy material. Ankle grazer style are also not permitted)
School V-Neck navy jumper/with school logo (optional)
White shirt
School House Tie
Black shoes
Plain dark/white socks/tights
Plain top coat (not denim or leather)
Suitable carrying bag

MALE & FEMALE PE KIT

The Wordsley School games shirt
The Wordsley School sweatshirt
Navy shorts
Navy knee length socks
Trainers
Swimming wear
Towel
Swimming cap and gum shields (available from school)
Shin pads

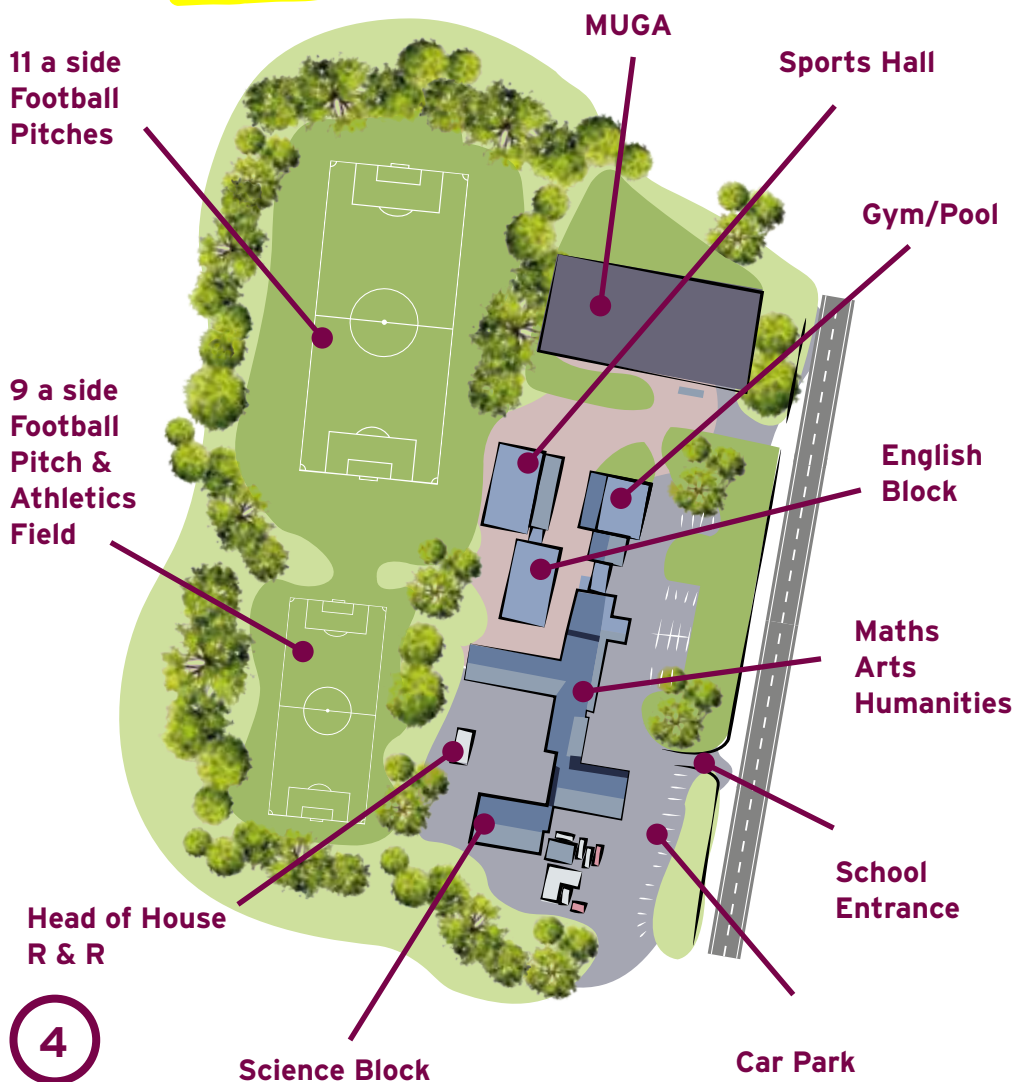


Don't worry about bringing your PE kit for your first day. We will give you your timetable and you can bring it for your next lesson.

SCHOOL MAP

TOP TIP

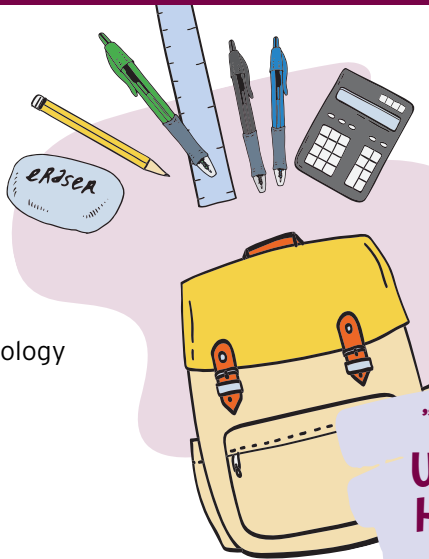
**DON'T WORRY ABOUT GETTING LOST.
JUST ASK AN OLDER STUDENT OR ADULT
AND THEY WILL BE HAPPY TO HELP YOU.**



WHAT WE STUDY - LESSON LIST

KS3

Mathematics
English
Science
History
Geography
RE
Computing
Design Technology
Spanish
Art
Drama
PE
Music
RSCE



Equipment

Pen (black or blue)
Green Pen
Pencil & Rubber
Scientific calculator
Ruler

**"SINCE JOINING THE
WORDSGLEY SCHOOL I
HAVE MADE LOTS OF
NEW FRIENDS."**

KS4

English Language
English literature
Mathematics
Science
Core PE
RE/RSCE
Art and Design (3D Design)
Art and Design (Fine Art)
Art and Design (Textiles)
Business
Computer Science
Design Technology
Drama
Food Preparation and Nutrition
Geography
Health and Social Care
History
Music

Physical Education (Full GCSE and/or
BTEC)
Religious Education (Full GCSE)
Science (Separate sciences)
Spanish



FIRST DAY - WHAT WILL HAPPEN AND WHAT WILL I NEED

Welcome Assembly

Form time

From break onwards, normal lessons

End of day assembly

Suitable bag for your books and other equipment

Basic stationery such as a pen, pencil, ruler & rubber

Snack/lunch if you are not purchasing from the canteen

FAQ'S

What if I'm lost?

If you are lost ask a member of staff or older student. You will soon settle in.

What happens if I need the toilet?

You should only use the toilet at break, lunch and during lesson change over and not during lessons. Some students have a toilet pass if they have a medical reason to use the toilet, and they can just show this to the teacher. It may take you a little while to get used to this routine, so don't worry. Your teachers understand it takes time.

What happens at break and lunchtimes?

During break time and lunch, you can go outside and play football on the MUGA or go to the library or attend a club. You can buy food from the Dining Hall at both break and lunch times using money put onto your ParentPay account.

What happens if I am ill or have a medical appointment?

If you need to leave during the school day for a medical appointment, you should bring in a letter from home with the details and give it to the attendance office. If you're feeling too unwell to come to school, your parent or career needs to ring into school to let us know. If you're feeling unwell during the day, you can ask to go to the first aid room where our school first aider will help you feel better or call home if you need to leave school. Don't worry, we will look after you!

How will I make friends?

Your first few days of school will all be about making friends, and we will provide you with lots of opportunities to do this. If you haven't made any friends or find it difficult, we will help you. Just let your Form Tutor or Head of year know, and they will buddy you with another student to help you make friends.



"I REALLY LIKE ATTENDING FORM EVERYDAY AS WE ARE LIKE A FAMILY."



CLASSROOM RULES & REWARDS

While you are at school, you should treat everyone and everything with respect by:

- Always using your best manners
- Moving calmly and sensibly around the site
- Always wearing the correct full uniform
- Keeping your hands, feet, and any objects to yourself
- Not touching anyone without their consent

Follow classroom rules, including:

- Arriving equipped to learn
- Following the seating plan
- Listening respectfully
- Speaking, not to dominate but to participate
- Making a positive contribution
- Doing your very best in every lesson



Rewards

You will be awarded achievement points for following our school values, working hard, and participating in lessons. When you achieve enough achievement points, you receive a bronze badge to wear on your blazer. You will be presented with this in assembly by your Head of year. Your

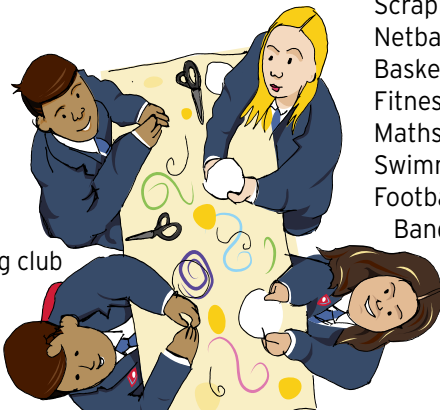
family will be told about your achievement. The more points you get, the more awards you will receive and badges to wear. We also enjoy fun competitions between the Forms or Year groups. As well as being lots of fun, these competitions help us learn how to work together as a team.

EXTRA-CURRICULAR CLUBS

We have a wide range of exciting extra-curricular clubs that give you the chance to follow your own interests or try something new. They are also a fantastic opportunity to make new friends who share similar interests.

Lunchtime activities include:

Art/ DT
Choir
Football
Scrabble club
Basketball
Debate club
Book club
Guitar group
Creative writing club
Just dance
Band



After school clubs include:

Scrapbook club
Netball
Basketball
Fitness
Maths challenge
Swimming
Football
Band
Spanish film club
Rap club



OUR VALUES



RESILIENCE

We respond well to change and are keen to improve



INTEGRITY

We are honest and have strong moral principles



RESPECT

We have an appreciation and awareness of others



CURIOSITY

We have enquiring minds and are keen to learn



KINDNESS

We are friendly and considerate of each other

OUR MOTTO: BELIEVE ACHIEVE INSPIRE

Our school is defined by its culture and ethos.

At The Wordsley School our culture and ethos is our unique selling point and together we strive to fulfil our mission, with a clear vision, motto and five key values that underpin our daily work.

The Wordsley School truly is a special place to be with a kind and supportive atmosphere, encouraging all pupils to achieve their best and this is structured within our Mission, Vision and Values.

TOP TIP

**PACK YOUR BAG THE NIGHT BEFORE EACH SCHOOL DAY.
YOU WILL BE LESS LIKELY TO FORGET ANYTHING**

**"I LOVE HOW OUR SCHOOL IS LIKE A COMMUNITY AS
EVERYONE IS ALWAYS HAPPY TO HELP YOU."**