



Black Country Skills Factory

# Labour Market Information Black Country

## Parent & student guide

[www.blackcountryskillsfactory.co.uk](http://www.blackcountryskillsfactory.co.uk)

Black Country Skills Factory

# Labour Market Information Black Country

## Parent & student guide

### Black Country Skills Factory

The Deckhouse  
Waterfront West  
Dudley Road  
Brierley Hill  
DY5 1LW

08458 15 15 15  
[www.blackcountryskillsfactory.co.uk](http://www.blackcountryskillsfactory.co.uk)

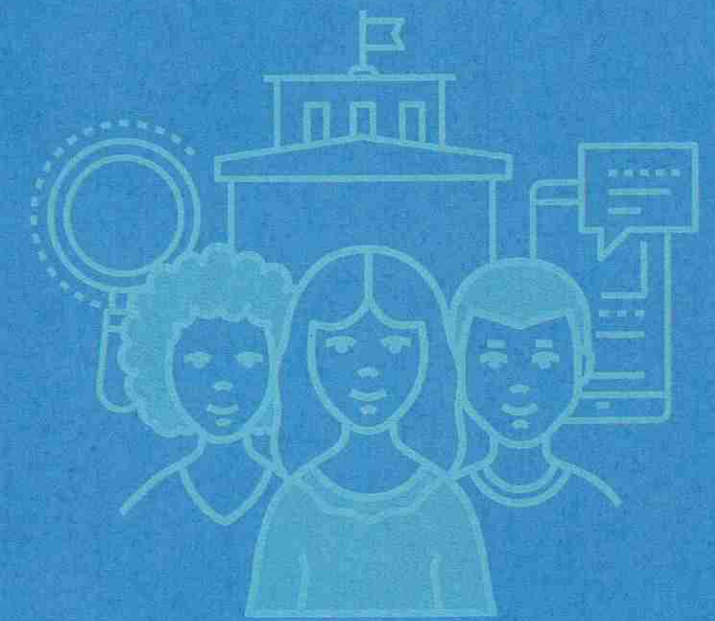
© 2021 Black Country Consortium  
Registered in England and Wales No. 5159791

# Labour Market Information Black Country

Parent & student guide

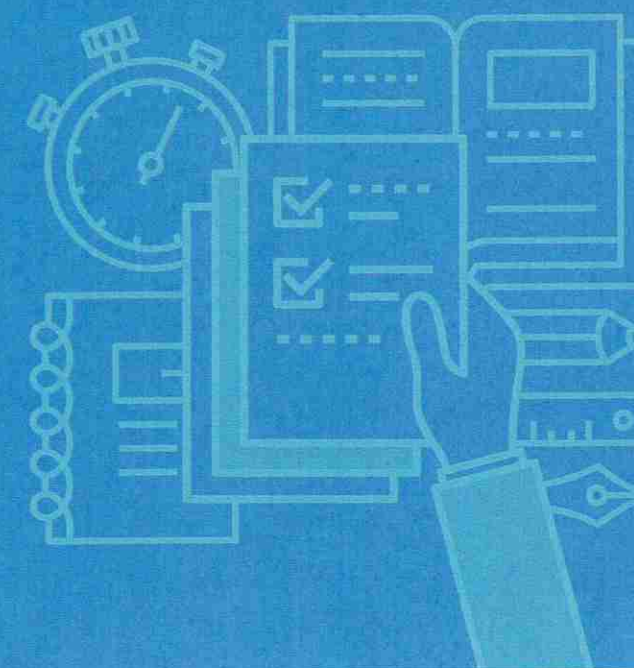
## What is LMI?

Labour Market Information (LMI) is a useful tool to help research future jobs in the local area, understand the skills needed for certain roles and the demand for future employment. LMI helps to break down the complex 'world of work' – ranging from descriptions of different careers, their entry routes, promotional prospects, salaries paid, skills and qualifications needed, etc. Crucially for young people, LMI also covers future demand – what kinds of jobs will be in demand after leaving school and what kinds of skills will be needed.



## Why is LMI important to Young People?

The world of working is changing rapidly. New technology and industry changes create some new jobs and also make others obsolete. Alongside the ongoing Covid-19 pandemic changing the way jobs are carried out and having a huge impact on the job market, it can be hard to keep up. It is important that young people are given the tools and information to aid their decisions about future careers and LMI is a key part of this.





### How can LMI help young people decide what to do next?

Having up to date, high quality information can help students decide things about their future such as:

- Are there opportunities close to where I live in the sector I am interested in or will I need to relocate?
- How competitive is the industry I am interested in?
- Are there enough jobs and do I need to have a back-up plan?
- Does the pay for the job I want align to what I would like to earn?
- What is the best route for me to take to get to the job I would like?
- Is the industry I would like to work in growing or shrinking?

We hope you find the information in this guide useful. For further information and detailed LMI please follow the below links:

[www.prospects.ac.uk](http://www.prospects.ac.uk)

A career website aimed at recent graduates.

[www.lmiforall.org.uk](http://www.lmiforall.org.uk)

A comprehensive portal which collates LMI.

[www.icould.com](http://www.icould.com)

A website aimed at young people, using personal stories to inform career choices and each video is linked to relevant LMI.

[www.nationalcareers.service.gov.uk/explore-careers](http://www.nationalcareers.service.gov.uk/explore-careers)

Shows a variety of career profiles, under each there is information about salaries, working hours and typical duties.

[www.gov.uk/government/publications/uk-labour-market-projections-2014-to-2024](http://www.gov.uk/government/publications/uk-labour-market-projections-2014-to-2024)

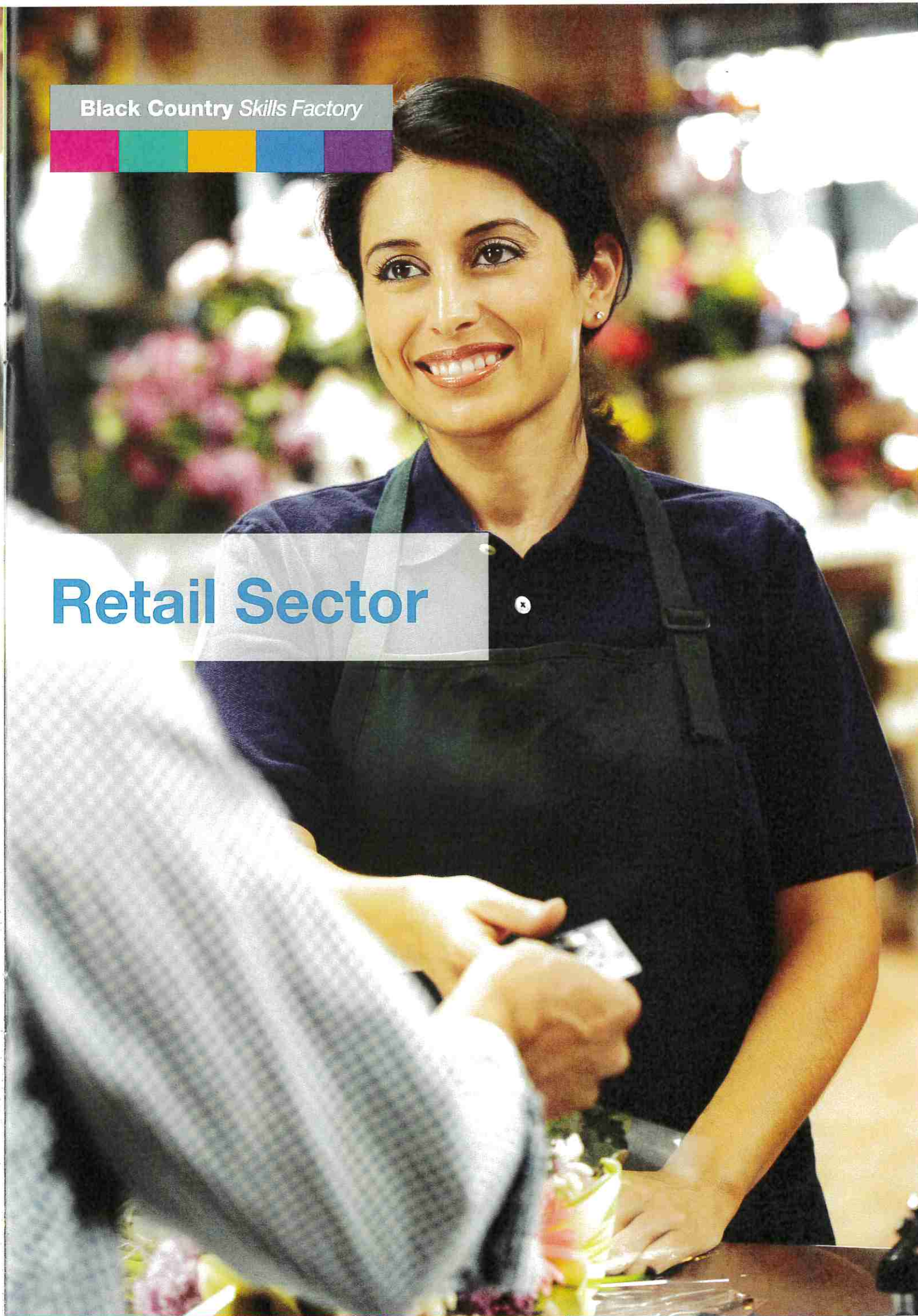
UK Labour market predictions.

[www.blackcountryskillsfactory.co.uk/school-resources/local-labour-market-intelligence](http://www.blackcountryskillsfactory.co.uk/school-resources/local-labour-market-intelligence)

The Very Local Labour Market Information comprises of 30 'Town Maps' covering the Black Country and 5 'Key Sector' Dashboards for each Local Authority Area (Dudley, Sandwell, Walsall and Wolverhampton).

Black Country Skills Factory

## Retail Sector



# Retail Sector

Types of jobs available in this sector	Trends Globally and nationally	What to consider at school
Visual Merchandiser, Store Manager, Sales Assistant , Customer Technical Manager	Advances in technology will allow retailers to enhance products and services. Increased and higher demand for online shopping and a shift from in shop jobs to online services such as customer service and operation support	ICT, Sciences, Soft Skills, Leadership & Communication

## The Top 10 Companies in The Black Country by Turnover

- Poundland Limited
- W.Brindley(Garages)Limited
- A.F.Blakemore And Son Limited
- Keltruck Limited
- Thyssenkrupp Materials (UK) Limited
- CST Holdings (UK) Limited
- Arcelormittal Distribution Solutions UK
- Press Metal UK Limited
- East End Foods Holdings Limited
- Guest Motors Limited

## Avg. Wages Per Job in Retail

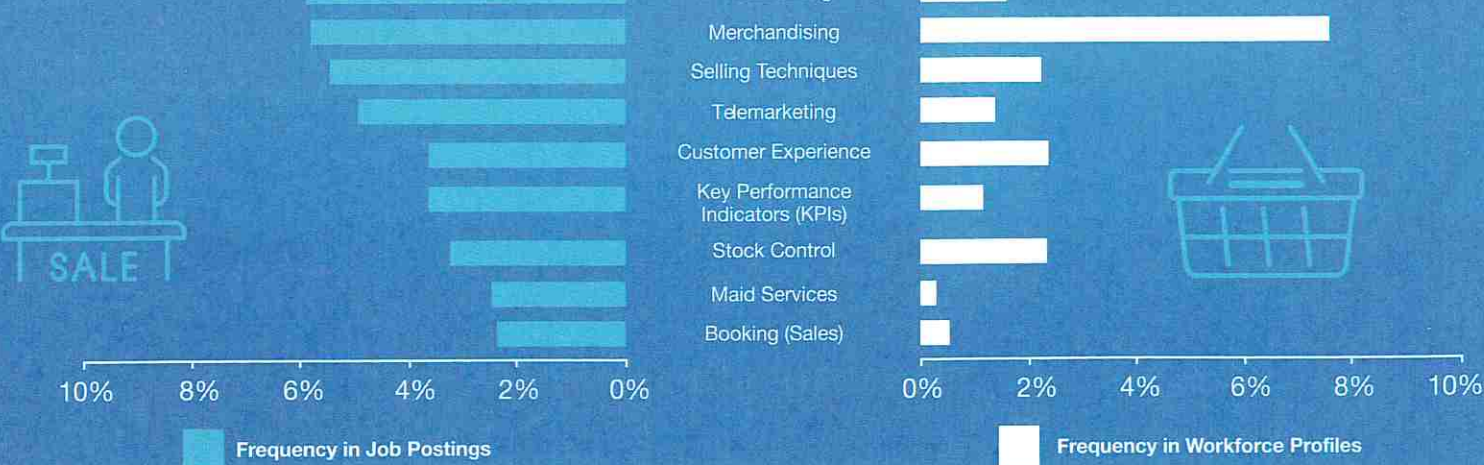
Wholesale and retail trade of motor vehicles and motorcycles **£25,742**

Wholesale trade **£29,655**

Retail Trade **£17,246**



## Top Hard Skills



## Black Country Skills Factory

# Business Services

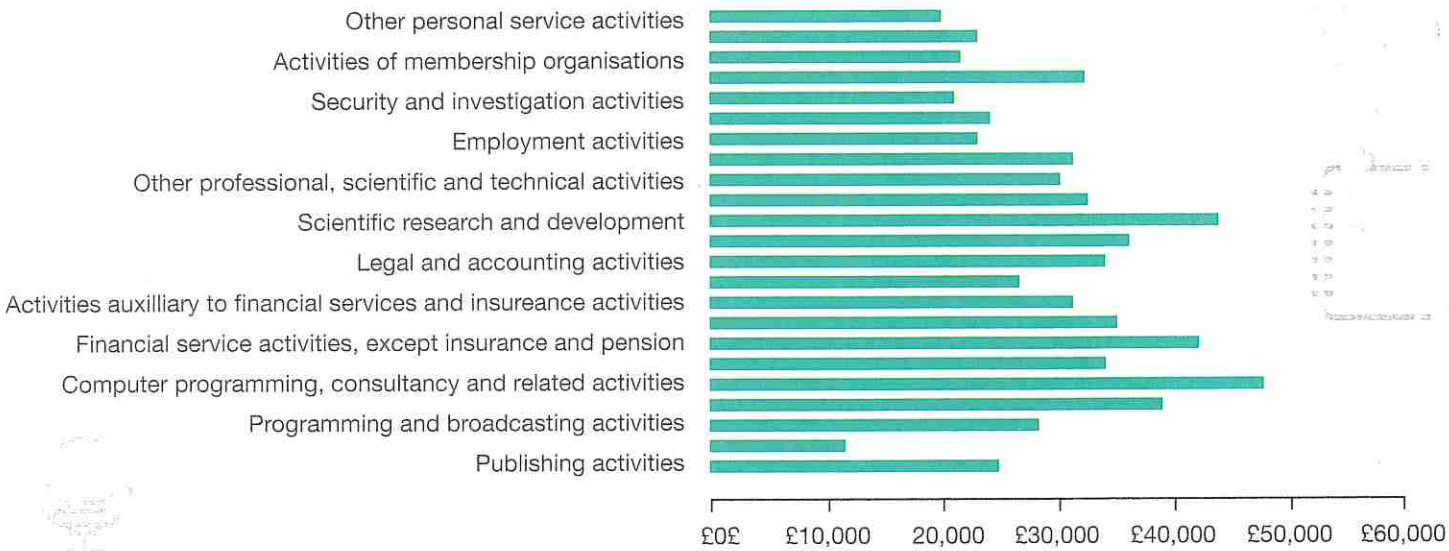
## The Top 10 Companies in The Black Country by Turnover

- RAC Group (Holdings) Limited
- LSP Holding (UK) Ltd
- Amari Metals Limited
- Hayley Group Holding Limited
- The Staffing Group Limited
- IBP Global Trading Limited
- South Staffordshire PLC
- London & Cambridge Properties Limited
- Charter Court Financial Services Group PLC
- Mehta Holdings Limited

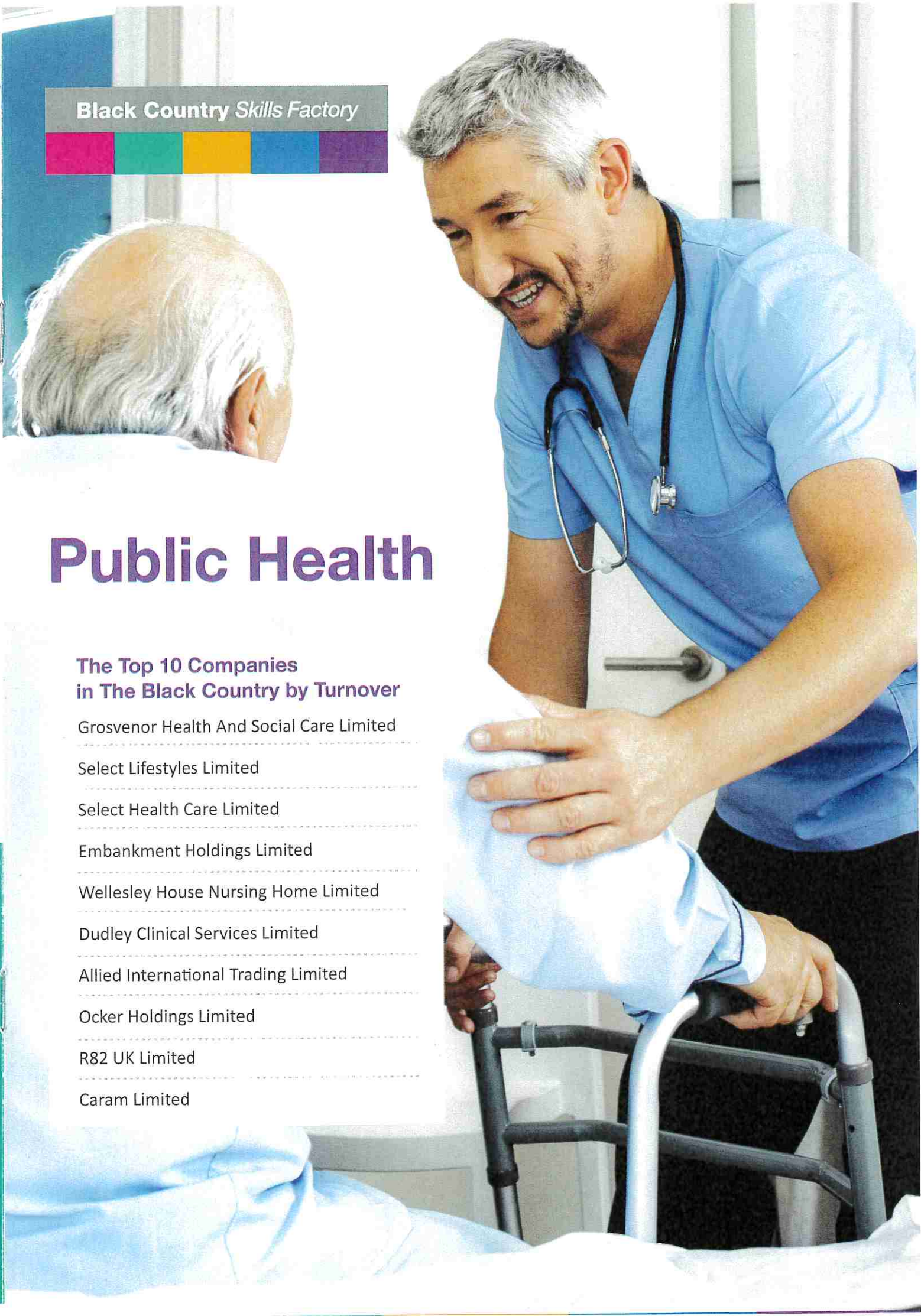
# Business Services

Types of jobs available in this sector	Trends Globally and nationally	What to consider at school
Project Manager, Accountant, Mortgage Advisor, Cyber Security Specialist	Use of new technology such as Artificial Intelligence & Machine Learning. Skills in coding, cyber and security and programming. Shift from in shop; to online operation support.	ICT Maths Sciences

## Avg. Wages Per Job in Business Services



## Top Hard Skills



Black Country Skills Factory

# Public Health

## The Top 10 Companies in The Black Country by Turnover

- Grosvenor Health And Social Care Limited
- Select Lifestyles Limited
- Select Health Care Limited
- Embankment Holdings Limited
- Wellesley House Nursing Home Limited
- Dudley Clinical Services Limited
- Allied International Trading Limited
- Ocker Holdings Limited
- R82 UK Limited
- Caram Limited

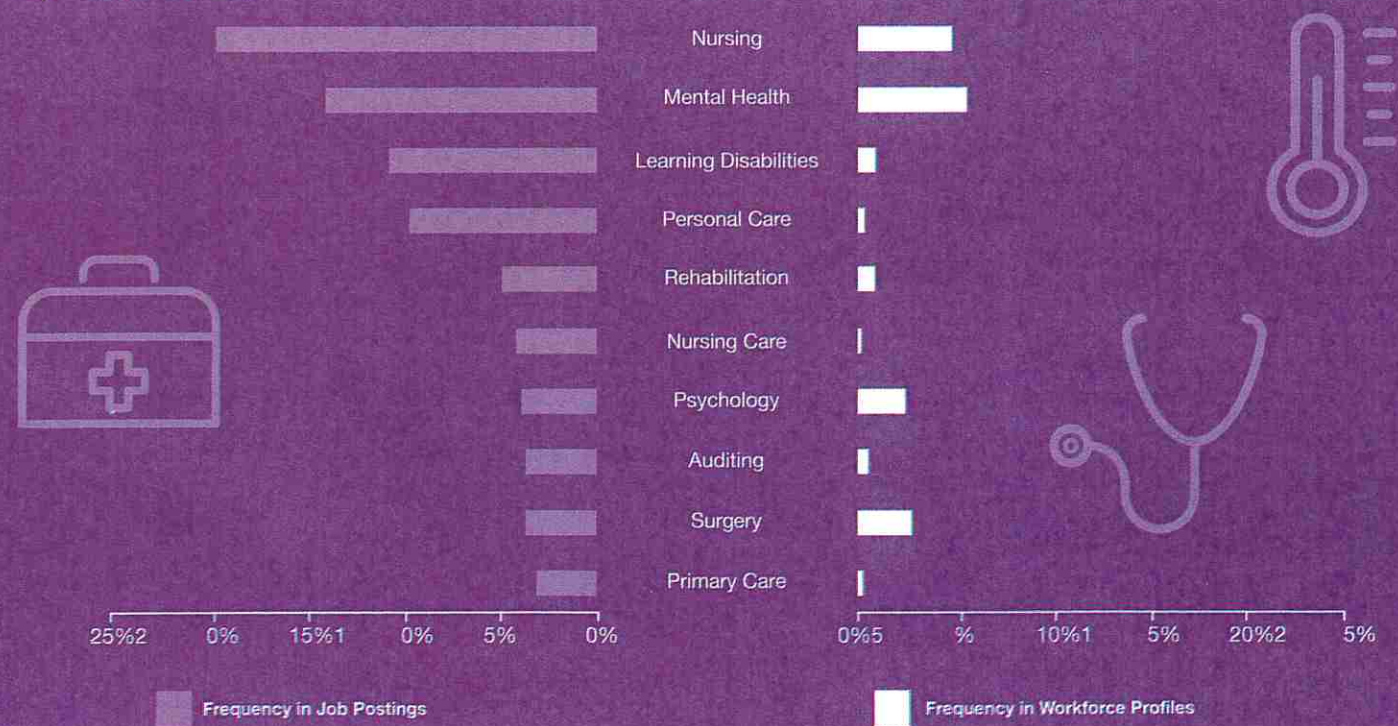
Public Health

Types of jobs available in this sector	Trends Globally and nationally	What to consider at school
NHS Scientist, Lab Technician, Nurse, Psychologist	Aging society, increased technology & widespread focus on mental health. Higher level jobs that involve developing and working alongside technology in health and care roles	Sciences Health/care courses Psychology ICT and DT

Avg. Wages Per Job in Public Health



Top Hard Skills



Black Country Skills Factory

Advanced Manufacturing

The Top 10 Companies in The Black Country by Turnover

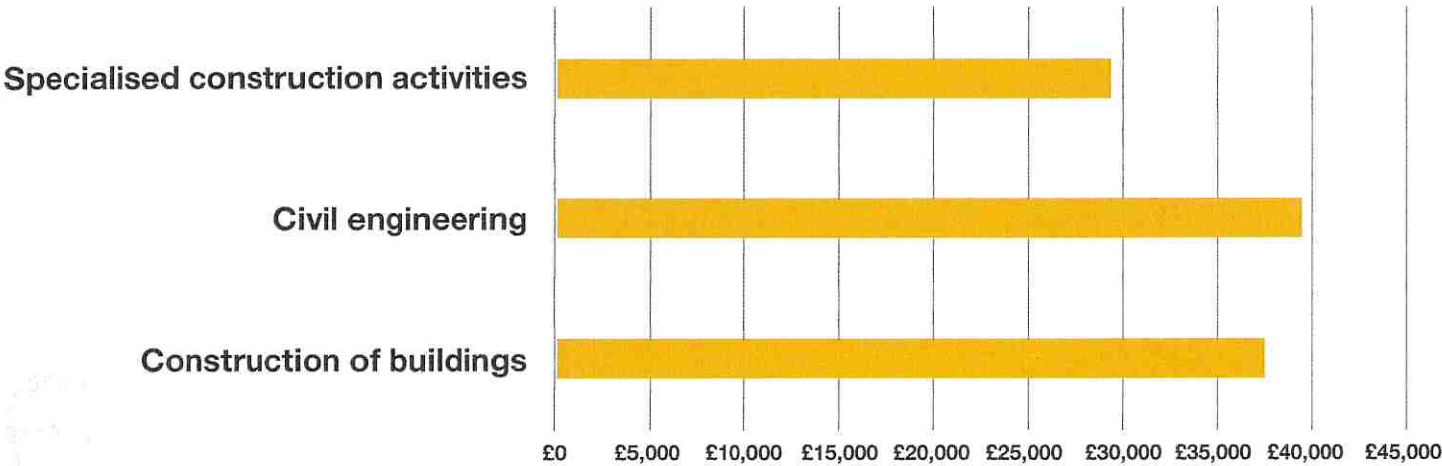
- Jaguar Land Rover Automotive PLC
- Assa Abloy Limited
- Sandvik Limited
- William King Limited
- K.T.C. (Edibles) Limited
- Mueller Europe Limited
- Zf Lemforder UK Limited
- B.E. Wedge Holdings Limited
- Tarmac Building Products Limited
- Castings Public Limited Company

Types of jobs available in this sector	Trends Globally and nationally	What to consider at school
Production Manager, Games Designer, Civil Engineer, Battery Technology Specialist	Jobs that require different skills such as design and creative skills. Jobs requiring higher skills such as technology, robots, artificial intelligence, data and electrics	D&T, Physics Maths ICT. Chemistry

# Construction

Types of jobs available in this sector	Trends Globally and nationally	What to consider at school
Project Manager, Civil Engineer, Architect, Quantity Surveyor, Wood trades, Electrical trades , Technical and IT roles, Landscape Architect	Design and build processes geared towards environmental impact, working with robots, virtual reality and drones.	ICT, DT, Physics

## Avg. Wages Per Job in Construction



## Top Hard Skills

